

## FLEXONIC®



Our high-performance Flexonic® belt is fitted with an elastic polyamide cord. We use a molding process to guarantee the highest quality. They can be installed on systems with a fixed center-to-center distance, making any type of transmission layout feasible, such as serpentine belt assemblies or receivers engaged by the back surface, providing constant tension.

- Products Family: **Belts**

## TECHNICAL FEATURES

- Longitudinal grooves.
- Compatible with 0.1 to 100 kW transmission.
- Four different models available: PH, PJ, PK and PL.

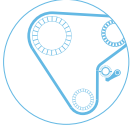
## BENEFITS

- Lightweight
- Comfort
- Cost-Effective
- Reliability

## MARKET AND EXPERTISE



INDUSTRY



Belt Drive Systems

## **ALL PRODUCTS FAMILIES**

# **All Products Families for Industry Belt Drive Systems**



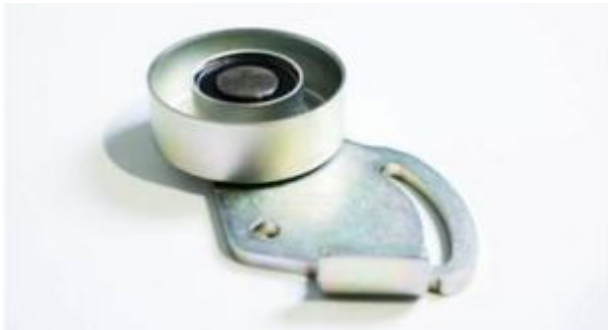
### **Belts**

Our belts transmit power from the motor to all power transmission receivers. They resist both high and low temperatures, dynamic loads and abrasions. They also offer an outstanding acoustic performance.



## **Hydraulic Belt Tensioners**

Our Hydraulic Belt Tensioners reduce vibrations in power transmission systems. They also extend transmission lifespans by optimizing belt tension. They're particularly well suited for components with a high dynamic behavior.



## **On/Off Idlers**

They guarantee the position and automatic tension once the FleXonic® belt has been installed for complex multi-shaft systems. Enable a quick assembly adapted to the FleXonic® belt tension even in the most complex cases.